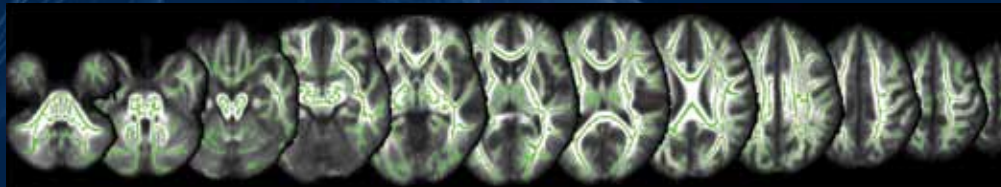




2011

ADVANCES in EPILEPSY

SIXTH ANNUAL UC IRVINE EPILEPSY SYMPOSIUM



Saturday, January 29, 2011

**The Arnold and Mabel Beckman Center of the
National Academies of Sciences and Engineering**

COMPREHENSIVE EPILEPSY PROGRAM

UC IRVINE • HEALTHCARE

GUEST FACULTY



Samuel Wiebe, MD, MSc FRCPC
Professor
Division of Neurology
University of Calgary

Samuel Wiebe is a professor and head of the Division of Neurology in the Department of Clinical Neurosciences at the University of Calgary in Canada and director of the Comprehensive Epilepsy Programme, as well as the clinical research director of the Hotchkiss Brain Institute in Calgary, Canada. His areas of academic interest include surgical trials in epilepsy, epidemiological studies, outcome assessment, and economic analyses. Dr. Wiebe is past chair of the International League Against Epilepsy North American Region Commission and has recently been elected secretary-general of the International League Against Epilepsy. Dr. Wiebe is past Kinsmen Chair for Paediatric Neurosciences and has recently been awarded the Hopewell Professorship in Clinical Neurosciences Research.

FACULTY

COURSE CHAIR



Jack J. Lin, MD
Associate Professor
UC Irvine Department of Neurology
Director, Clinical Neurophysiology
Fellowship Program
UC Irvine Comprehensive Epilepsy Program



Steven L. Small, MD, PhD
Chair, Department of Neurology
UC Irvine School of Medicine



Tallie Z. Baram, MD, PhD
Professor, UC Irvine Departments
of Pediatrics, Neurology,
and Anatomy/Neurobiology
Chair, Executive Committee
UC Irvine Epilepsy Research Center
Scientific Director, UC Irvine
Comprehensive Epilepsy Program

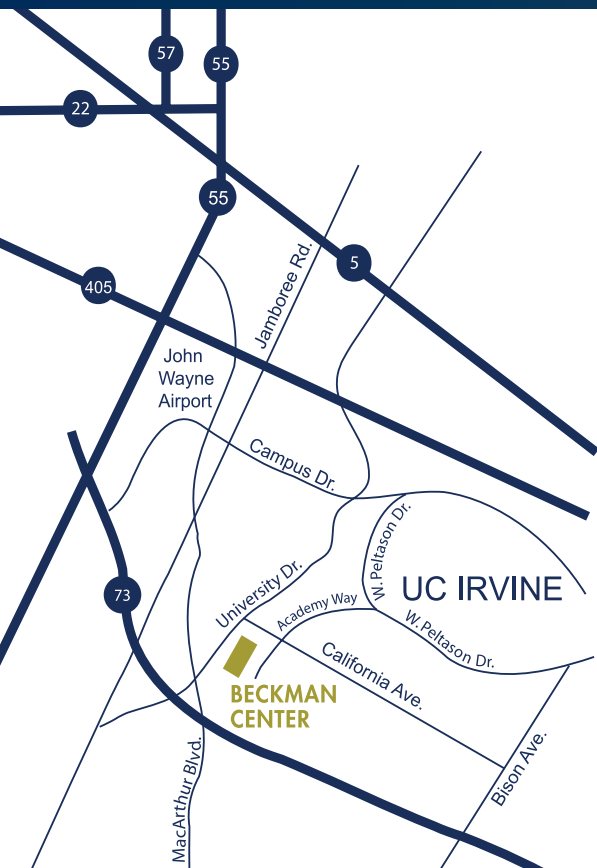


Joanne Hamilton, PhD
Assistant Research Scientist
Department of Neurosciences
University of California, San Diego
Private Practice Clinical
Neuropsychologist
San Diego/Orange County, CA



Mona Sazgar, MD
Associate Clinical Professor
UC Irvine Department of Neurology
Director, UC Irvine Comprehensive
Epilepsy Program

LOCATION



PROGRAM

- 8:00 am **Welcome**
Jack J. Lin, MD
- 8:10 am **Introductory Remarks**
Steven L. Small, MD, PhD
- TOPIC I: Advances in the Diagnosis of Epilepsy**
- 8:15 am **How does the brain become epileptic?
New implications for diagnosis.**
Tallie Z. Baram, MD, PhD
- 8:45 am **Pitfalls and solutions in the diagnosis of epilepsy:
The role of video EEG monitoring**
Jack J. Lin, MD
- 9:15 am **Diagnosing cognitive and psychiatric
complications of epilepsy**
Joanne Hamilton, PhD
- 9:45 am **Panel Q & A**
- 10:00 am **Break**
- TOPIC II: Advances in the Treatment of Epilepsy**
- 10:15 am **New antiepileptic drugs:
Role in refractory epilepsy**
Mona Sazgar, MD
- 10:45 am **Advances in the surgical treatment of epilepsy:
Impacts on cognition and mood**
Keynote Speaker: Samuel Wiebe, MD
- 11:45 am **Panel Q & A**
- Noon **Lunch**
- TOPIC III: Advances in Patient Outcome**
- 1:00 pm **Improving quality of life in epilepsy:
What are the important factors?**
Samuel Wiebe, MD
- 1:45 pm **Panel Q & A**
- 2:00 pm **Closing Remarks**

**Arnold and Mabel Beckman
Center of the National Academies
of Sciences and Engineering**

100 Academy Way, Irvine, CA 92617

DIRECTIONS

From the Los Angeles Area

Follow Interstate 405 south to Highway 73 South/SJH Toll Road. Follow Highway 73 approximately 2 miles and exit at University Drive. Turn left on University Drive and continue to California Avenue. Turn right on California Avenue, then turn right at the first street, Academy.

From the San Diego Area

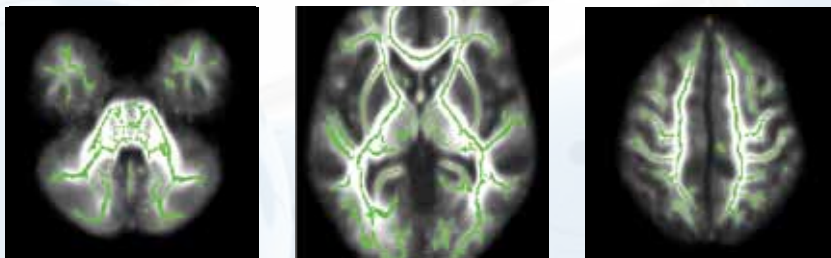
Follow Interstate 5 north to Interstate 405 north. Take the Jeffrey/University Drive off ramp and turn left. Continue on University Drive approximately 3 miles to California Avenue. Turn left on California Avenue, then right at the first street, Academy.

From the Riverside Area

Take the 91 Freeway west to the 55 Freeway south to Interstate 405 south. Exit at Jamboree Road west toward the coast. Continue on Jamboree Road to Campus Drive. Turn left at Campus Drive. Continue on Campus Drive to University Drive. Turn right on University Drive to the second signal, California Avenue. Turn left on California Avenue, then turn right at the first street, Academy.

LEARNING OBJECTIVES

- ⇒ Identify patients who continue to have disabling seizures despite antiepileptic drug treatment and refer them to an epilepsy center for other treatment options, such as epilepsy surgery.
- ⇒ Assess the most recent pharmacologic guidelines for the treatment of epilepsy and incorporate them into their practice.
- ⇒ Identify when to refer epilepsy patients with mood disorders to appropriate mental healthcare professionals.
- ⇒ Use appropriate diagnostic tools to differentiate different types of seizures.



ACCREDITATION STATEMENT

The University of California, Irvine School of Medicine is accredited by the Accreditation Council for Continuing Medical Education to provide medical education for physicians.

DESIGNATION STATEMENT

The University of California, Irvine School of Medicine designates this live activity for a maximum of 4.75 *AMA PR Category 1 Credit(s)*[™]. Physicians should only claim credit commensurate with the extent of their participation in the activity.

ADA STATEMENT

In compliance with the Americans with Disabilities Act, we will make every reasonable effort to accommodate your needs. For any special requests, please contact Laurie Gumser, lgumser@uci.edu, 714.456.3707 by January 5, 2011.

AB1195

This activity is in compliance with California Assembly Bill 1195, which requires continuing medical education activities with patient care components to include curriculum in the subjects of cultural and linguistic competency. For specific information regarding Bill 1195 and definitions of cultural and linguistic competency, please visit the CME website at www.cme.uci.edu.

DISCLOSURE STATEMENT

It is the policy for the University of California, Irvine School of Medicine and University of California CME Consortium to ensure balance, independence, objectivity and scientific rigor in all CME activities. Full disclosure of conflict resolution will be made in writing via handout materials or syllabus.

2011

ADVANCES in EPILEPSY

SIXTH ANNUAL UC IRVINE EPILEPSY SYMPOSIUM

Saturday, January 29, 2011

The Arnold and Mabel Beckman Center of the
National Academies of Sciences and Engineering

CONTACT INFORMATION

NAME (First, Middle, Last)		CREDENTIALS
ORGANIZATION		MEDICAL SPECIALTY
Preferred mailing address is (select one): <input type="radio"/> Work/Business <input type="radio"/> Home		
ADDRESS		
CITY	STATE	ZIP
E-MAIL (required for confirmation)		
TELEPHONE <input type="radio"/> Cell <input type="radio"/> Home <input type="radio"/> Work		FAX
Special Needs: If you have special assistance needs or dietary restrictions, please describe here:		

REGISTRATION

Symposium Registration Fee:		
<input type="radio"/> Physicians	\$75	<input type="radio"/> Patients/Families Complimentary
<input type="radio"/> PA's/Nurses/Allied Health Professionals	\$50	

PAYMENT INFORMATION

<input type="radio"/> Check is enclosed in the amount shown at right—make checks payable to UC REGENTS		\$
Please charge my Credit Card: <input type="radio"/> MC <input type="radio"/> Visa <input type="radio"/> AmEx <input type="radio"/> Discover	ACCOUNT NUMBER	EXP. DATE (MO/YR)
NAME (as it appears on credit card, please print clearly)		DATE
AUTHORIZED SIGNATURE		

PLEASE MAIL OR FAX COMPLETED REGISTRATION FORM TO:

UC Irvine Medical Center, Laurie Gumser, Business Development
333 City Blvd West, Suite 1205, Orange, CA 92867
714.456.3707 • 714.456.7713 (fax) • lgumser@uci.edu

2011
**ADVANCES
in EPILEPSY**

**SIXTH ANNUAL
UC IRVINE EPILEPSY
SYMPOSIUM**



Saturday, January 29, 2011

The Arnold and Mabel Beckman Center of the
National Academies of Sciences and Engineering

COURSE OVERVIEW

Advances in Epilepsy 2011 symposium is presented by the esteemed faculty of the UC Irvine Comprehensive Epilepsy Program. This year's internationally known guest faculty speaker is Professor Samuel Wiebe of University of Calgary. The half-day symposium is designed for neurologists, neurology healthcare professionals, patients and caregivers who are dedicated to improving healthcare for people with epilepsy. The focus will be on recent advances in diagnosis and treatment, providing insight and strategy to enhance the quality of life for people with epilepsy.

TARGET AUDIENCE

Physicians, nurses, allied healthcare providers, individuals with epilepsy, and family members who want to expand and update their knowledge of current research, clinical diagnosis, management, and emerging treatments, as well as cognition and quality-of-life issues related to complicated epilepsy.